

# Industrial User Inspections

Date September 22, 2022



# What is an Inspection?

Site visit is to determine compliance:

- Industrial Wastewater Discharge Permit & Sewer Use Ordinance
  - Permit Limits
  - Prohibited Discharges
- Federal Regulations
  - 40 CFR Part 403 and Part 136

# Role of the Inspector

- Ambassador
- Compliance Assistance vs. Enforcement
  - We carry a big stick, but shouldn't always use it as a first step
- Four Questions the Inspector must know:
  - What does the industry make?
  - How is it made?
  - What wastes are generated by the production of this product?
  - How are wastes treated or disposed?

# Preparation for Inspection

- Safety Equipment
- Calibrated pH meter
- pH Buffer Solution
- Permit Review
- Previous Inspection Review
- Proper Credentials
- Inspections can be announced or unannounced

# Safety

- Abide by all Industry safety policies
- No Confined Space Entry (unless trained and approved)
- PPE
  - Hardhat
  - Safety Shoes
  - Safety Vest
  - Safety Glasses
  - Goggles
  - Hearing Protection
  - Gloves
  - Site-Specific PPE



# Performing an IU Inspection

- Interview Representative
  - Discuss the Industrial Process/Processes
  - Discuss Pretreatment System
  - Hours of Operations
  - Contact Updates
- Walk through Facility
  - Where wastewater is generated
  - Where wastewater is treated
- Summarize Findings with Representative
  - Where Industry could make improvements
  - Discuss items they do a good job with

# Questions to Ask

- How is business?
- What are the raw materials used?
- Have you had any violations recently?
- Have you had any spills?
- How would you handle a spill?
- What kind of training do employees receive?
- Have you introduced any new products or services?
- Has wastewater discharge increased or decreased?
- How do you dispose of off spec product?
- Do you have pretreatment equipment?
- How often do you calibrate the pH meter/flow meter?
- Do you have a record of pH meter calibration?

# Questions to Ask (cont.)

- Are there open drains that receive storm water?
- What areas produce wastewater?
- Where do you store waste material?
- Is there any non process water that combines with the process water before the monitoring location?
- Where/how is the flow measured?
- How many flow meters do you have?
- Do you send in Self Monitoring Reports (SMRs)?
- Do you have a copy of your Industrial Wastewater Discharge Permit (IWDP)?
- Are you reporting all the reporting parameters?
- Let the industry know about calibration and reporting requirements.
- Do you have bulk chemical storage?



# What are you looking for?

- Permit Compliance
  - Operations are as stated in permit and permit application
  - Proper Pretreatment
  - pH within limits
  - Sampler functioning and clean tubing
- Permit Noncompliance
  - Bypassing Pretreatment
  - Illegal Discharges
  - Lack of Spill Protection
  - Dilution in lieu of Treatment

# What are you looking for? (cont.)

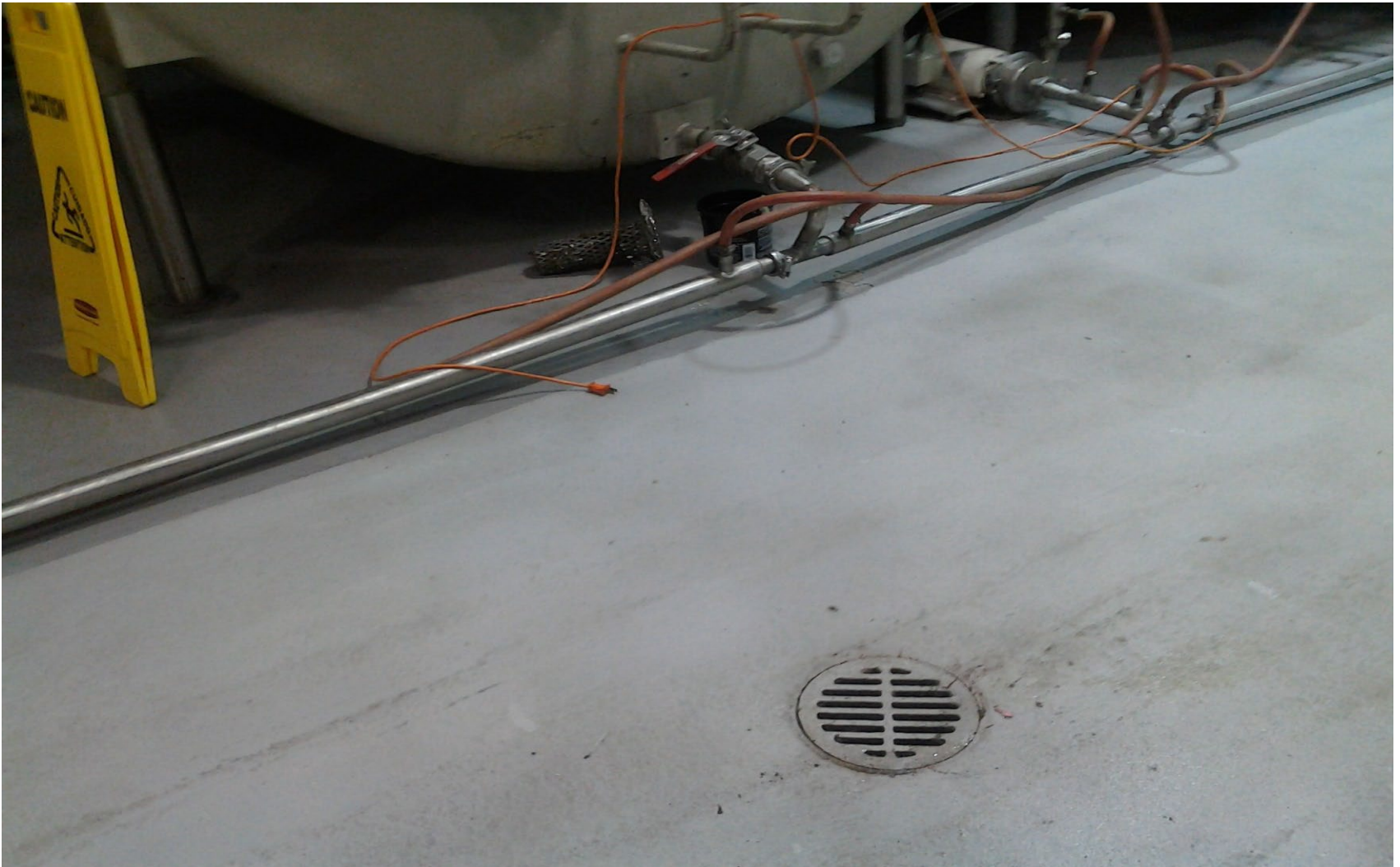
- Floor Drains near chemical storage, Haz. Waste
- Chemical Storage with Secondary Containment
- Cleanliness/Housekeeping
- Proper Haz. Waste Accumulation, Storage, & Disposal
- Effluent pH
- Pretreatment System Functioning Properly

# Inspection Form

## INDUSTRIAL USER INSPECTION CHECKLIST

I. General Inspection Information			
Name of industry:			
Date of visit:		Visit start time:	Visit end time:
Inspection Type/Purpose	<input type="checkbox"/> Scheduled	<input type="checkbox"/> Unscheduled	<input type="checkbox"/> Enforcement
	<input type="checkbox"/> Complaint	<input type="checkbox"/> New Company	<input type="checkbox"/> Follow-up
	<input type="checkbox"/> Permit Renewal	<input type="checkbox"/> Spill/Slug	
Name of inspectors/affiliation:			
Printed name:		Signature Date:	
Last inspection date:			
Inspected by:			
Did the previous inspection identify deficiencies that the industrial user was required to correct? <input type="checkbox"/> Yes <input type="checkbox"/> No			
Were deficiencies corrected? <input type="checkbox"/> Yes <input type="checkbox"/> No		Explain:	
List all observed noncompliance issues and any corrective action that has been taken, or is planned:			
Provide the name(s) and title(s) of industry representative(s)			
Printed Name(s)		Title/Phone number(s)	
Email(s)			
Signature			Date:
II. General Facility Information			

# What are you looking for? (cont.)



# What are you looking for? (cont.)



# What are you looking for? (cont.)



# What are you looking for? (cont.)



# What are you looking for? (cont.)





# What are you looking for? (cont.)



# What are you looking for? (cont.)



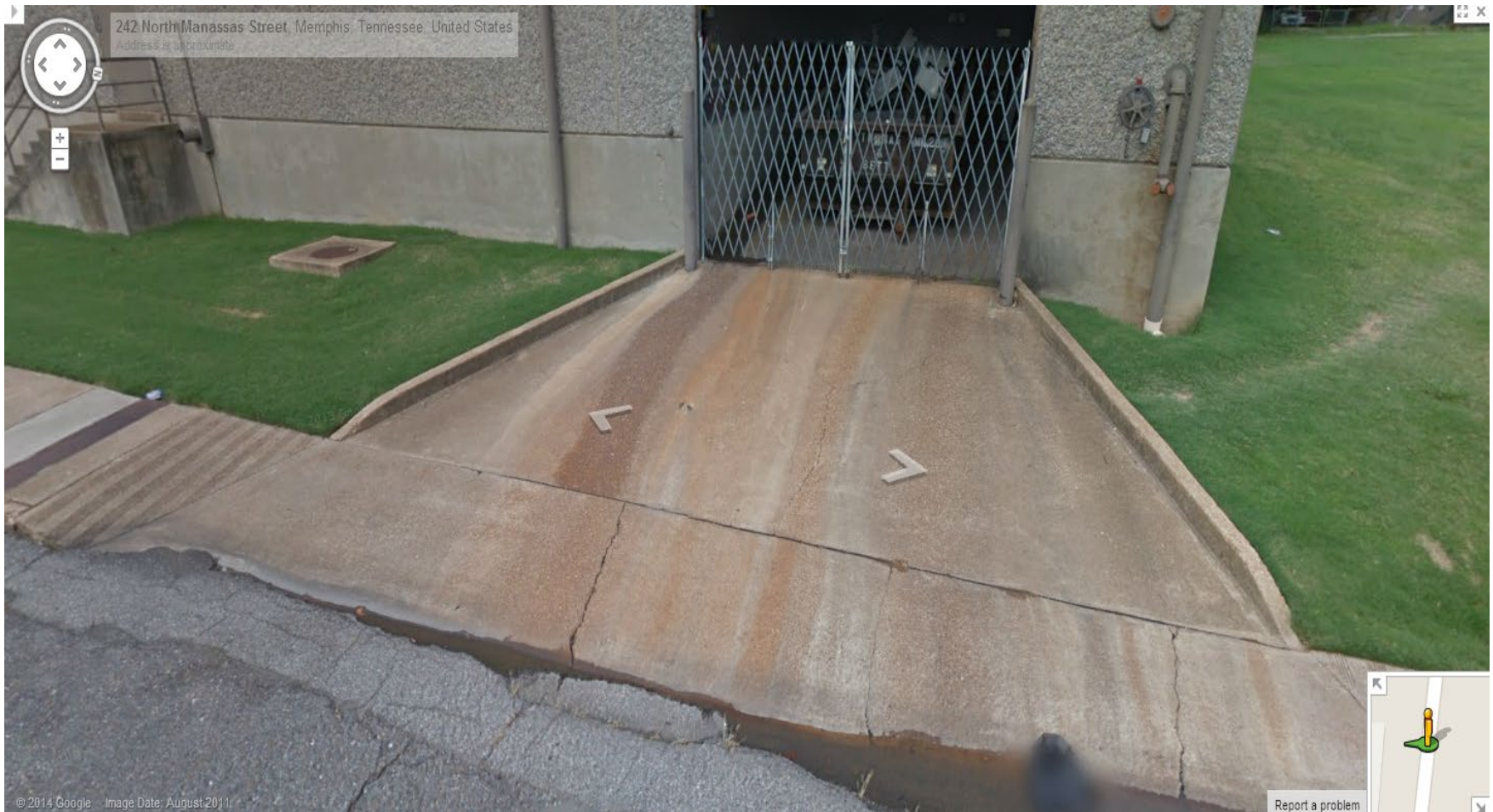
# What are you looking for? (cont.)



# What are you looking for? (cont.)



# What are you looking for? (cont.)



# What are you looking for? (cont.)



# What are you looking for? (cont.)



# What are you looking for? (cont.)





# What are you looking for? (cont.)



# What are you looking for? (cont.)



# What are you looking for? (cont.)



# What are you looking for? (cont.)



# What are you looking for? (cont.)



# What are you looking for? (cont.)



# What are you looking for? (cont.)

# What are you looking for? (cont.)







Thank you.  
Questions?

